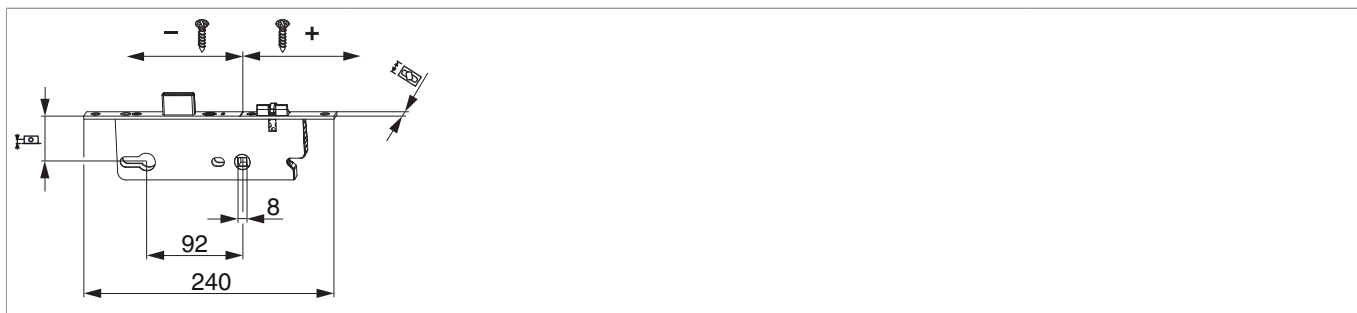




241854 - Mortise lock Z-RS entry92 BS45 PC silver square spindle =8 F-240x16

Technical drawing



					L		Nº
silver	92	45	8	16	240	10	241854

Screw position table

Nº				
241854	2	-140	80	

Product image

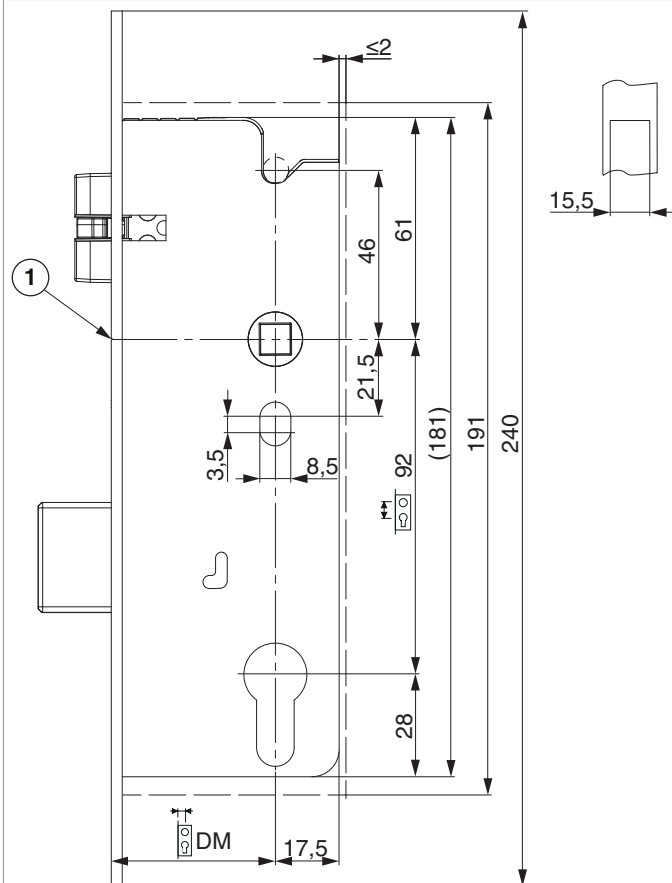




241854 - Mortise lock Z-RS entry92 BS45 PC silver square spindle =8 F-240x16

Routing

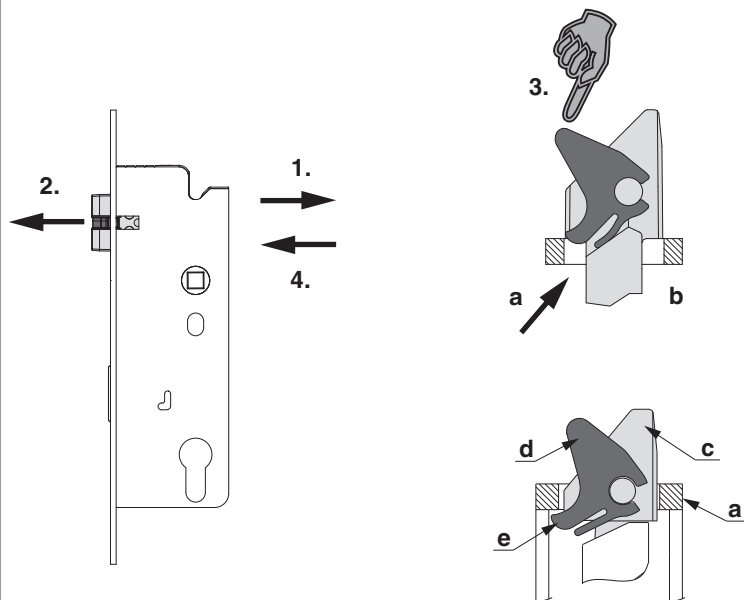
Lock cases



1) faceplate notch

Latch conversion

Cranked latch



1.) Loosen screw completely and push it towards the front with a screwdriver.

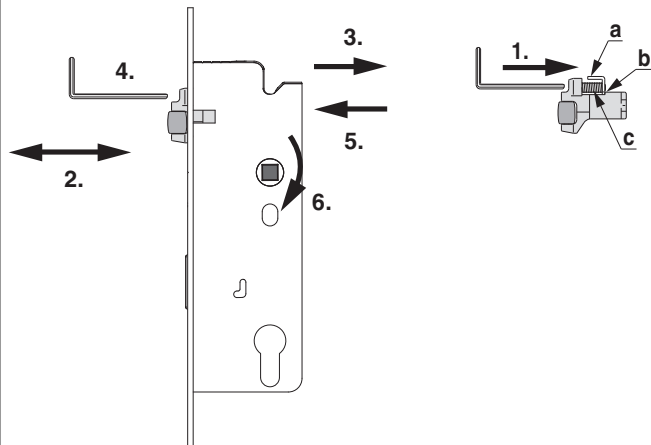
2.) Remove latch

3.) Reverse latch and position in faceplate (a) ensuring that the latch insert's (d) insert leg (e) can be pushed under the faceplate recess (b). Then push latch fully in.

4.) Replace screw (torque min. 1.5 Nm up to max. 2 Nm).

Carry out operational check!

Installation of roller latch



1.) Screw in grub screw with 3mm allen key until stop position.

2.) Insert roller latch into doorlock ensuring that the grub screw can be adjusted from the upper side.

3.) Replace screw on rear side of lock case (torque min. 1.5 Nm up to max. 2 Nm).

4.) Adjust roller latch (to fit the striker) by unscrewing grub screw with the aid of the adjusting bracket.

5.) Unscrew screw completely.

6.) Hold roller latch and operate handle.

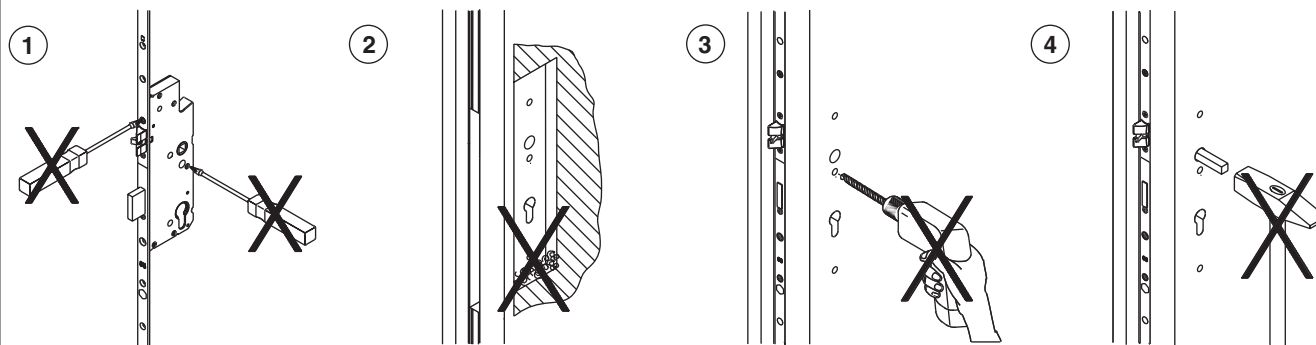


241854 - Mortise lock Z-RS entry92 BS45 PC silver square spindle =8 F-240x16

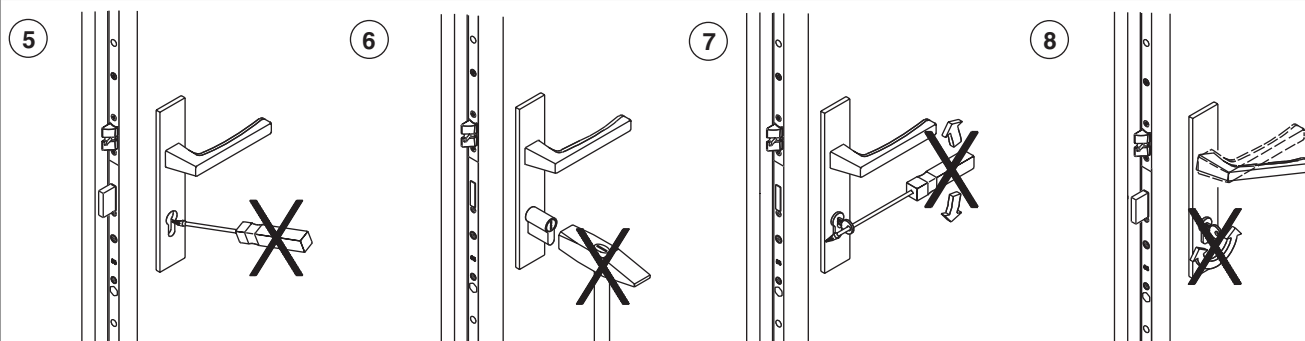
Installation of roller latch

- a) Adjustment bracket
- b) Stop position
- c) Grub screw

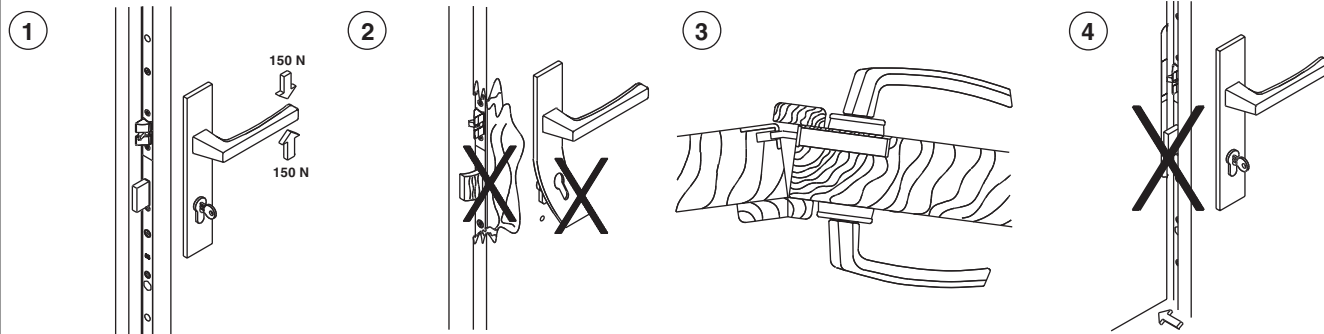
Operating instructions



- 1) Never open the lock case!
- 2) Remove chips from milling pocket!
- 3) Carry out all drilling work before installing the lock!
- 4) Do not hammer lever handle spindle pin forcibly through spindle-receiver!



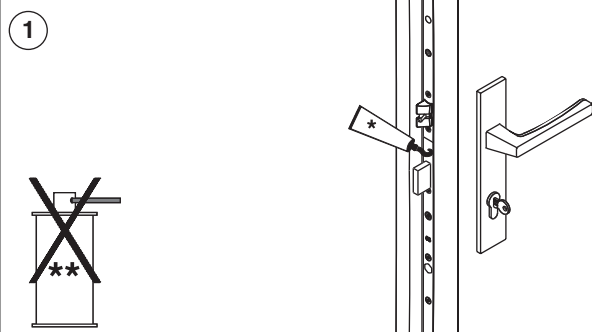
- 5) Do not use force when installing the cylinder!
- 6) Do not apply force through external leverage in order to turn the key!
- 7) Do not operate lever handle and key simultaneously!



- 1) Apply a maximum force of 150 Nm in the operation direction (on the lever handle)!
- 2) If traces of force are visible, the lock must be replaced.
- 3) On double doors, the active door must be opened before the passive door.
- 4) Ensure deadbolt is not protruding when door is open!



- 5) Do not carry door by lever handle!
- 6) Do not paint or varnish over the lock's deadbolt and latch!



- 1) The doorlock (lock casing) is supplied with a high performance lubricant and DOES NOT require any further lubrication. Latch and deadbolt must be lubricated once a year.

* Grease

** Rust remover, silicone spray etc.

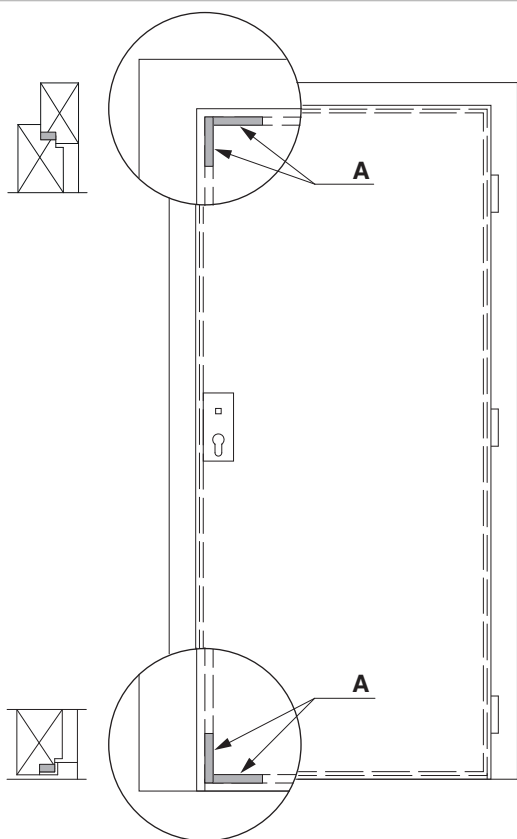


241854 - Mortise lock Z-RS entry92 BS45 PC silver square spindle =8 F-240x16



Lubrication is to be carried out generally only with lubrication grease or technical Vaseline!
Do not use any lubrication oils, rust removers, silicone sprays, WD40 etc.!

Use of transport protection devices



Simple transport protection devices, wedges or blocks should be used when transporting the door as a whole unit.
Remove only after installation!

A) Positioning of transport protection devices