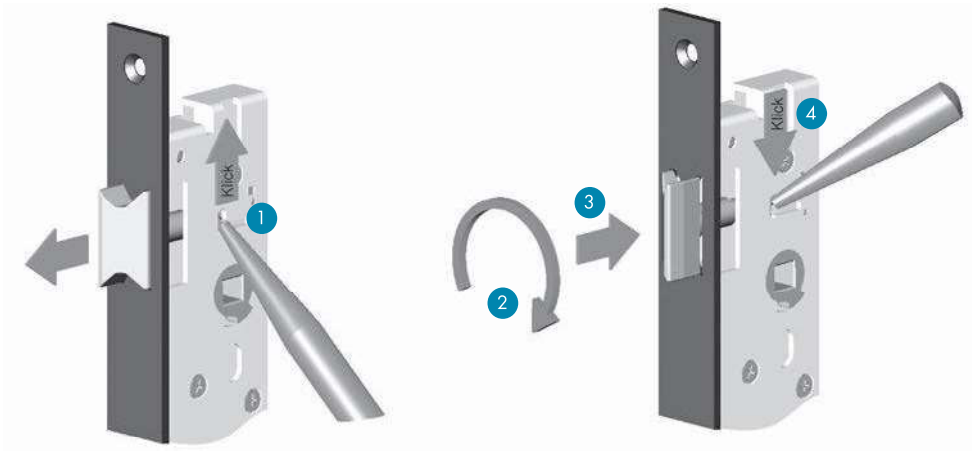
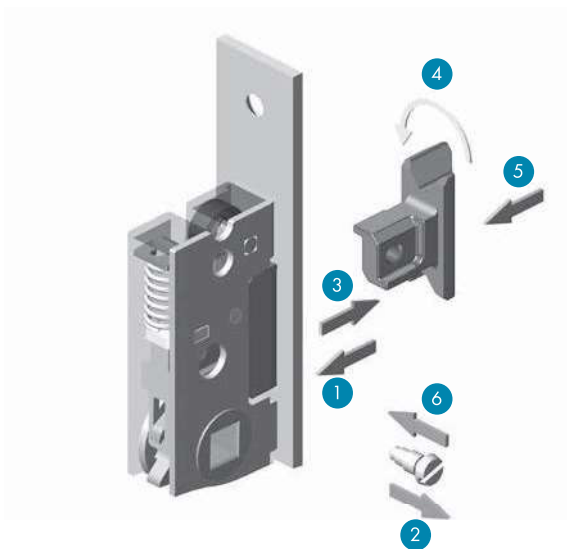


Latch bolt rotation



Art. No. **1433** from backset 25 mm, **1438, 038F, 138F**

- Press slide upwards until latch bolt moved forward (1)
- Turn the latch bolt by 180° (2)
- Slide back latch bolt to stop position (3) and press slide downwards (4)



Art. No. **1433**, backset 20 mm

- Press latch bolt (1)
- Release retaining screw (2)
- Pull out latch bolt (3)
- Turn the latch bolt by 180° and reinsert it (4, 5)
- Fix retaining screw (6)